



FAMILY & CONSUMER SCIENCES



VOL. 2022-5

Creating Healthy & Sustainable Families



What's New

HELLO FROM FCS
AGENT, DEBBIE
SHEPHERD - PAGE 1



SPRING RAIN PATTERN
& INSTRUCTIONS -
PAGE 2 & 3



GET CREATIVE DAYS -
PAGE 4

Hello - Our next In-Stitches class is scheduled for May 18th featuring "Spring Rain" pattern. Please let us know if you will be attending. We are still experiencing phone issues. DO NOT leave a message on the voice mail system because we probably won't get it. Keep calling back until you get a live person! You can also email Joy, Vicki, or me.

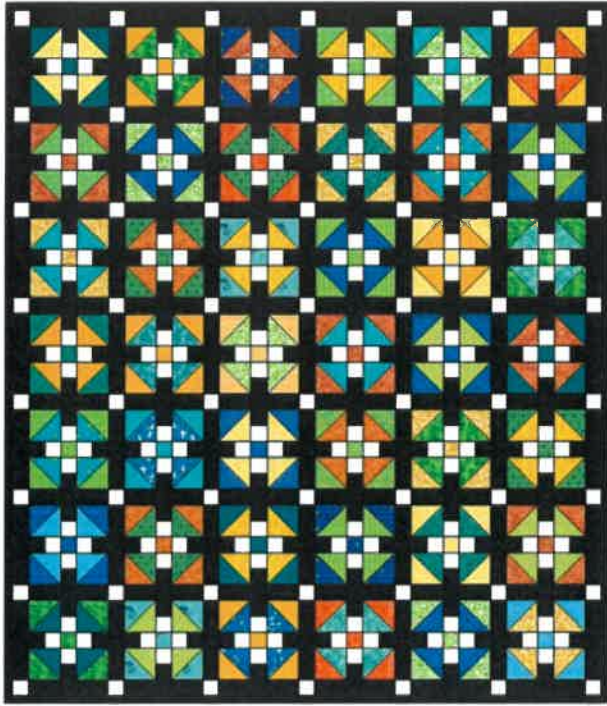
Happy Stitching! Debbie

Debbie.Shepherd@uky.edu

Joy.McGinnis@uky.edu

Vicki.McDonald@uky.edu

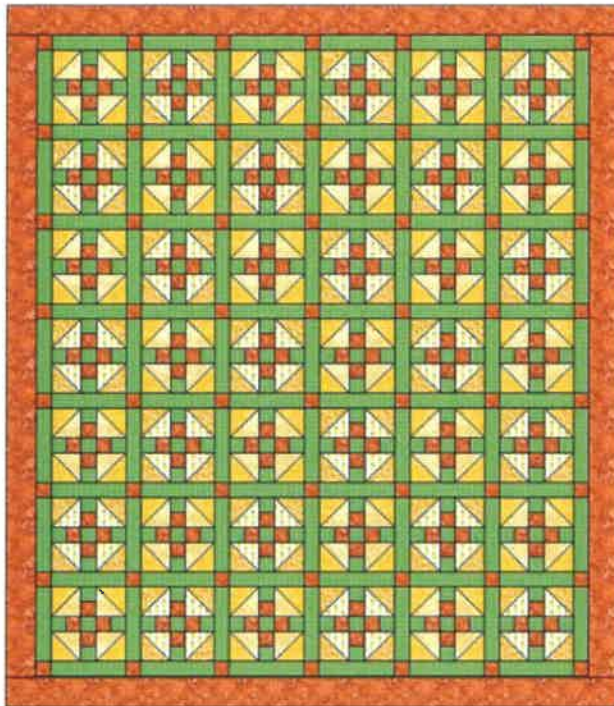




Laurie's Color Way



Joy's Color Way



Deb's Color Way

In Stitches

Wednesday May 18th 10am
Wayne County Extension Office
Downstairs Meeting Room

Spring Rain!

Pattern by: Missouri Star Quilt Company

Quilt is 82" X 94"

*Don't forget to bring your
items for Show & Tell!*



*Deb's is planned ~all yellow is one fabric, all white is one fabric = 21 yellow 10" squares & 21 white 10" squares.

Materials Student Needs To Bring to Class:

- One layer cake or 42 ~ 10 inch squares of a variety of fabrics
- 3 yards background fabric
- 1 ¼ yards contrasting print
- 1 ½ yards for outer border
- ¾ yard for binding
- 7 ½ yards for backing

Coordinating threads

Sewing machine and sewing supplies (scissors, pin cushion, seam ripper, etc.)

Supplies Provided:

Pattern and Instructions Cost: \$5 per student.

Class Preparation/Cutting Instructions: (if you need help prior to class just let us know we are very willing to help) *WOF means Width Of Fabric ~ from salvage to salvage.

Blocks

- Background Fabric - Cut 40 ~ 2 ½ inch strips WOF
- Contrasting Fabric - Cut 16 ~ 2 ½ inch strips WOF

Sashing & Cornerstones (use some of the strips above)

- Background Fabric - Cut 97 ~ 2 ½ inch X 10 ½ inch rectangles
- Contrasting Fabric - Cut 56 ~ 2 ½ inch squares

Please register so we can be prepared for you ~ Thanks!

Reminders!

Please bring your SHOW & Tell!

We have refrigerator and microwave available for your lunch & snack items or several local eateries.



Hold the Dates!

Thursday, July 21st – Saturday, July 23rd for our first annual Get Creative Days! We are seeking teachers!! Enclosed in the newsletter you will find a Get Creative Teacher Form. If you are interested in teaching classes, please fill out and return by May 15th. We are looking for ALL kinds of creative classes. Sewing, Quilting, Crafting, Fine Arts, Cooking....etc.



Wayne County Cooperative Extension Family and Consumer Sciences



Debbie Shepherd

Debbie Shepherd
Wayne County Extension Agent for
Family & Consumer Sciences
DS/vm



Cooperative Extension Service
Agriculture and Natural Resources
Family and Consumer Sciences
4-H Youth Development
Community and Economic Development

Educational programs of Kentucky Cooperative Extension serve all people regardless of economic or social status and will not discriminate on the basis of race, color, ethnic origin, national origin, creed, religion, political belief, sex, sexual orientation, gender identity, gender expression, pregnancy, marital status, genetic information, age, veteran status, or physical or mental disability. University of Kentucky, Kentucky State University, U.S. Department of Agriculture, and Kentucky Counties, Cooperating.
LEXINGTON, KY 40546



Disabilities
accommodated
with prior notification.